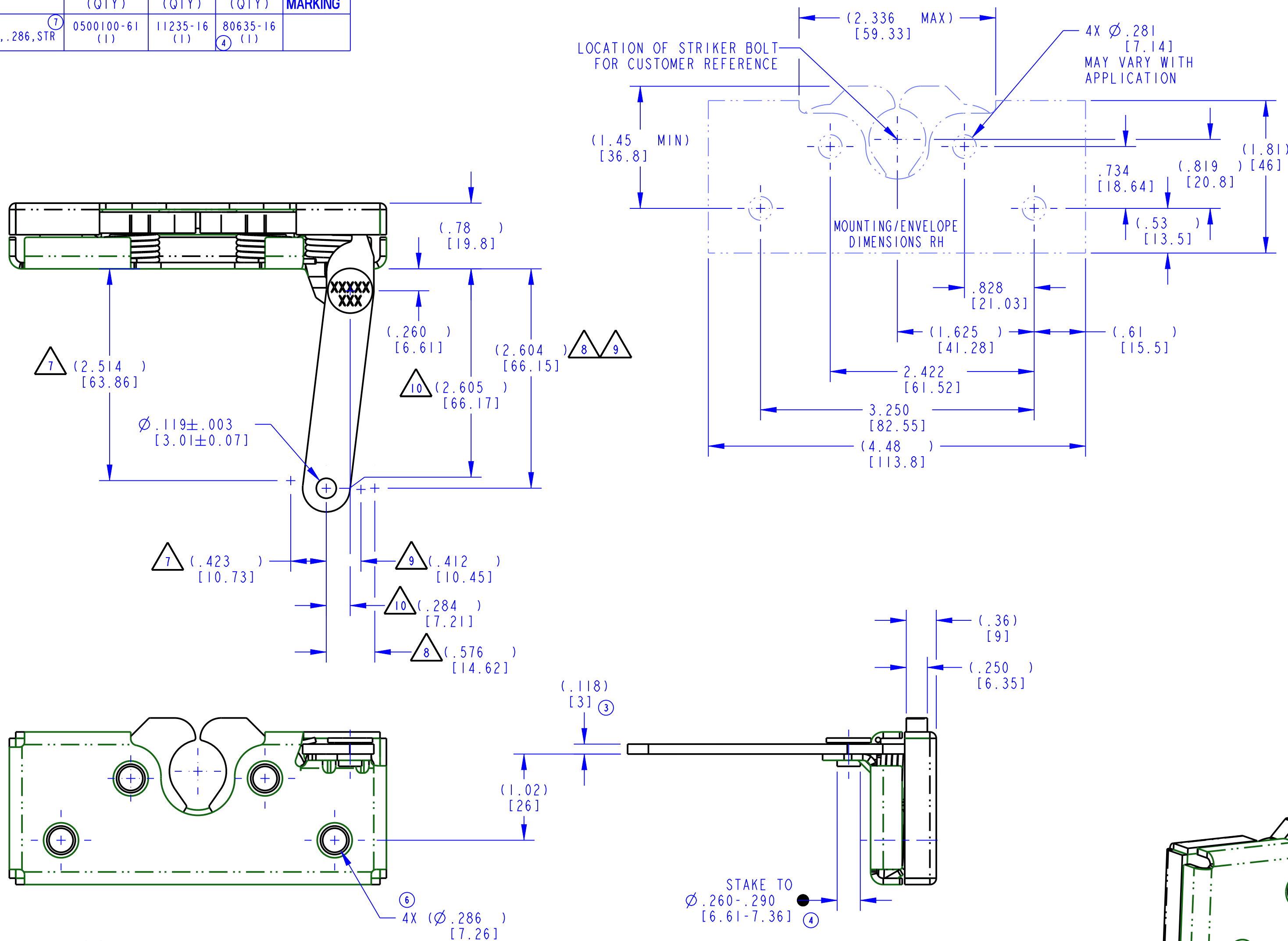


PART NUMBER DESCRIPTION	ITEM 1 BASE-LATCH (QTY)	ITEM 2 LEVER (QTY)	ITEM 3 RIVET (QTY)	⑦ PART MARKING
11455-16 050-0100, RH, 2POSN, .286, STR	0500100-61 (1)	11235-16 (1)	80635-16 (1)	

REVISION	ECN	ECN BY	DESCRIPTION
-	-	JLS 2/1/94	REDRAWN ON CAD
3	8018	JLS 2/3/94	.118 WAS .120, 1.142 WAS 1.144, 4.478±.030 WAS 4.485±.030, REMOVED NOTE 7 & RENUMBERED
4	10999	REP 6/3/99	80635-16 WAS 80613-16; WAS Ø.260/.290 AFTER STAKING
5	14219	TJW 01/24/00	REVISED NOTE 8, PROD CODE
6	21570	GDE 12/31/07	80854 QTY (1) WAS (2), 4X (Ø.286) WAS 4X .286 THRU, ADDED: 19428 (ITEM 12). HEX/TRIVALENT UPDATES. UPDATED TO NEW FORMAT.
7	37040	GDE 2011-06-08	CONVERTED TO BASE-LATCH FORMAT. UPDATED: NOTES, VIEWS, DIMENSIONS PRT MRKG, DESC, FORMAT (C WAS D).



- NOTES: ⑥ ⑦
- IDENTIFY ASSEMBLY WITH PART NUMBER AND DATE CODE APPROXIMATELY AS SHOWN, OR IN OTHER APPROVED LOCATIONS AS OUTLINED IN ES-121. ORIENTATION OF THE RIVET CONTAINING THE PART MARKING NOT IMPORTANT.
  - DIMENSIONS IN [ ] ARE MILLIMETERS FOR REFERENCE ONLY.
  - USE WITH TRIMARK'S Ø.675 [17.15] STRIKER BOLT.
  - WHEN MOUNTING LATCH, MOUNTING HOLE SIZE NOT TO EXCEED Ø.312 [7.92].
  - TIGHTEN 1/4-20 GRADE 5 (OR BETTER) OR M6 X 1 CLASS 8.8 (OR BETTER) MOUNTING FASTENERS TO THE FASTENER MANUFACTURER'S RECOMMENDED TORQUE VALUE; HOWEVER, DO NOT EXCEED 120 IN-LB [13.6 Nm].
  - ASSEMBLY COMPLIES WITH STRENGTH REQUIREMENTS OF SAE STANDARD J839.

- ⑦ FREE TRAVEL.
- ⑧ MAXIMUM TRAVEL.
- ⑨ RELEASE POINT.
- ⑩ CONTACT POSITION (SHOWN).

<p>● INDICATES REQUIRED ASSEMBLY INFORMATION.          UOS: THE -00 VERSION SHALL BE THE UNFINISHED VERSION OF PART SHOWN.          UOS: ALL DIMENSIONS APPLY BEFORE COATING. (ASME Y14.5M, sec. 2.4.1)</p>		<p><b>TriMark</b>          500 Bailey Avenue          P. O. Box 350          New Hampton, Iowa 50659 U.S.A.          Tel: 641-394-3188          Fax: 641-394-2392</p>									
<p><b>TOLERANCES UNLESS OTHERWISE SPECIFIED (UOS)</b>          ASME Y14.5M-1994</p> <table border="0"> <tr> <td>INCH</td> <td>MILLIMETER</td> </tr> <tr> <td>X.X = ±.1</td> <td>X = ±.3</td> </tr> <tr> <td>X.XX = ±.03</td> <td>X.X = ±.8</td> </tr> <tr> <td>X.XXX = ±.010</td> <td>X.XX = ±.25</td> </tr> </table> <p>ANGLES          X° = ±3°          X.X° = ±1.0°          X.XX° = ±.50°</p>		INCH	MILLIMETER	X.X = ±.1	X = ±.3	X.XX = ±.03	X.X = ±.8	X.XXX = ±.010	X.XX = ±.25	<p>DRAWN BY: KPE 1987-07-09          CHECKED BY: BAB          PROJECT: L86057-17          PRODUCT CODE: E01 (050-0100) ⑤          CUSTOMER: SEE BOM          CUSTOMER PART NUMBER: SEE BOM          PART WEIGHT: (0.79 LB)          SURFACE AREA: SEE BOM</p>	
INCH	MILLIMETER										
X.X = ±.1	X = ±.3										
X.XX = ±.03	X.X = ±.8										
X.XXX = ±.010	X.XX = ±.25										
<p>DO NOT SCALE DRAWING</p>		<p>DESCRIPTION: SEE BOM          SIZE: C ⑦          SCALE: 1.0          PART NUMBER: 11455</p>									